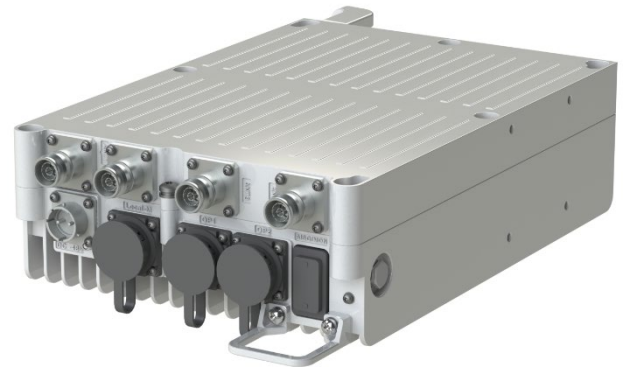


## INTRODUCTION

The LR5405 is an outdoor remote radio unit. It is the radio frequency (RF) part of a distributed base station and can be located near antennas.

Adopting an innovative design, LR5405 are able to work in 4 TX and 4 RX mode and therefore supports higher output power and larger carrier capacity.



## Electrical Data

<b>Frequency Band</b>	N77/N78
<b>Supported Air Standard</b>	NR
<b>Occupied bandwidth</b>	NR:100MHz
<b>RF Output Power</b>	4X5W
<b>Power supply</b>	-48V DC(-36V~-57V)
<b>Quantity of SFP</b>	2
<b>Data rate of Front</b>	10Gbps
<b>Noise Figure</b>	2.8dB (room temperature) 3.5dB (over temperature)
<b>3GPP Compliant</b>	TS38.104,TS38.141

## Interface information

<b>LED indicators</b>	6 x status LED RUN/ALM/ACT/VSWR/OP1/OP2
<b>Extended optical port</b>	2 x SFP+, 10Gbps, CPRI or eCPRI protocol (optional)
<b>Local management port</b>	1 x RJ45
<b>Power supply</b>	-48V DC(-36V~-57V)
<b>RF Antenna port</b>	4T4R 4x4.3-10 female connectors

## Environmental Data

<b>Ingress Protection (IP) rating</b>	<b>IP65</b>
<b>Operating temperature</b>	-40°C to +55°C
<b>Storage temperature</b>	-40°C to +85°C
<b>Relative humidity</b>	5% RH to 95% RH
<b>Atmospheric pressure</b>	70 kPa to 106 kPa, -400m~3000m
<b>Shockproof protection</b>	NEBS GR63 zone4
<b>Lightning Protection</b>	±20 KA, 8/20us
<b>MTBF</b>	≥ 150000 hours
<b>MTRR</b>	≤ 1 hours
<b>Cooling method</b>	Natural cooling
<b>Installation method</b>	Wall hanging or pole holding

## Mechanical Data

<b>Size</b>	330x260x100(mm)
<b>Volume</b>	<8.6L
<b>Weight</b>	<10Kg

## Series Model List

PartNumber	Description	Frequency
LR54-77D165	RRU N77 37dBm 5G 4T4R DC	UL / DL:3800-4200MHz
LR54-78D165	RRU N78 37dBm 5G 4T4R DC	UL / DL:3300-3800MHz