

# PR-RC2-NF-43M

RF adapter N female to 4.3-10 male

**PROSE**

- 50  $\Omega$  impedance
- N female to 4.3-10 male
- Field installation
- Working frequency up to 3.8GHz
- Good return loss and intermodulation performance

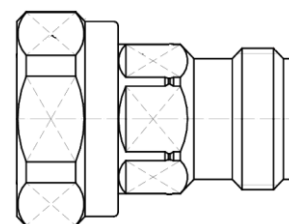


Photo for reference

## Part number

PR-RC2-NF-43M	RF adapter N female to 4.3-10 male
---------------	------------------------------------

## Electrical data

Characteristics impedance	50 $\Omega$
Frequency	DC to 3.8GHz
Insulation resistance	$\geq 5G\Omega$
Center contract resistance	1m $\Omega$ @4.3-10, 1m $\Omega$ @N
Outer contract resistance	0.6m $\Omega$ @4.3-10, 0.25m $\Omega$ @N
Dielectric withstanding voltage	2500V rms
Operating voltage	500V rms
Insertion loss	0.1* $\sqrt{FGHz}$ dB
Return loss	$\leq -30$ dB @ DC-1.0GHz
	$\leq -28$ dB @ 1.0-2.2GHz
	$\leq -26$ dB @ 2.2-2.7GHz
	$\leq -24$ dB @ 2.7-3.8GHz
Intermodulation (3 <sup>rd</sup> Order)	$\leq -160$ dBc @900MHz, 2x43dBm

## Mechanical data

Interface	N female
	4.3-10 male
Mating cycles	$\geq 100$ times
Coupling nut retention	$\geq 450$ N
Connector torque proof recommend	0.7-1.1NM @N
	5-8NM @4.3-10

## Environment

Working temperature	-45°C to +85°C
IP protection	IP68, mated pair
RoHS	Compliant

### Notice

- 1, The connection should be covered with addition weatherproof kits for long time duration.
- 2, Connection molding shape may be changed during the product life-time due to the manufacture skill upgrade.

While the information has been carefully compiled to the best of our knowledge, nothing is intended as representation or warranty on our part and no statement herein shall be construed as recommendation to infringe existing patents. In the effort to improve our products, we reserve the right to make changes judged to be necessary.